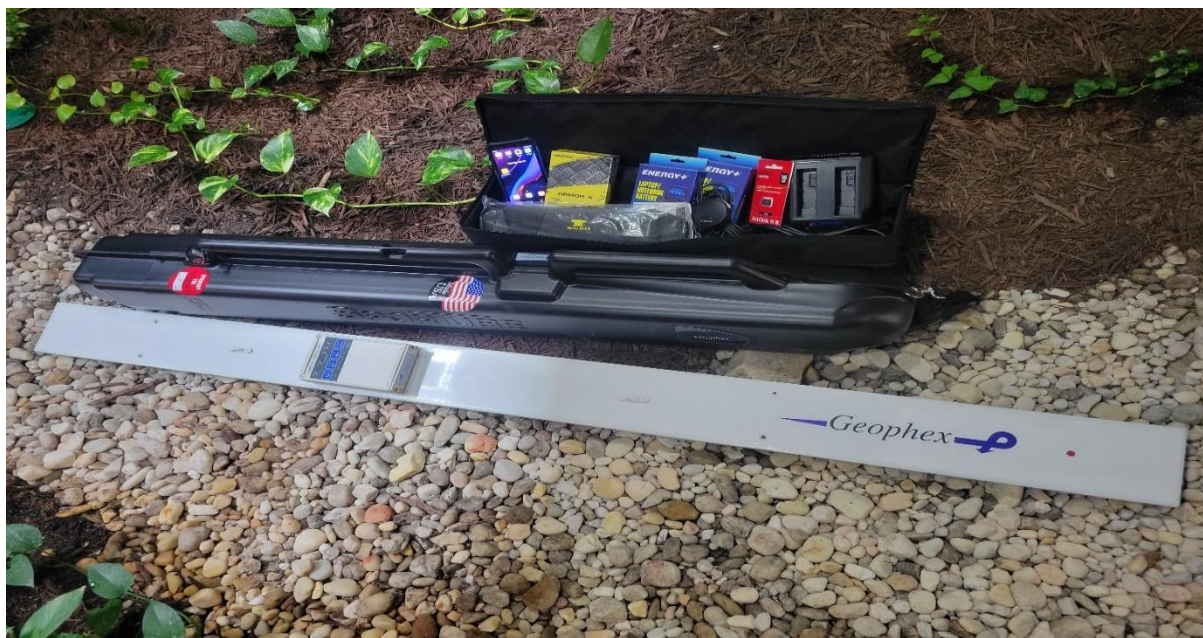


IT'S HERE.....

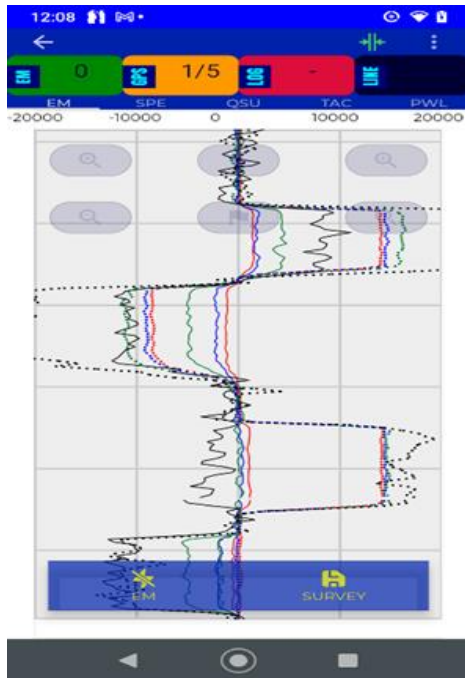
The newly redesigned GEM-2 is ready to ship!!

The GEM-2 has been redesigned to bring cutting-edge technology with simplicity of use. The light-weight GEM-2 (3.6kg) can be used as a handheld or UAV sensor.



Features:

- Frequency domain operation at up to 10 simultaneous frequencies
- Real time positioning with GPS receiver
- Real-time EI. Conductivity/Mag. susceptibility
- Optional txt-formatted output
- Frequency range 30Hz-93kHz
- Weight 3.6 kg
- Dims: L 183cm, W 12.5cm



Data logging direct to USB stick and/or real-time Android smartphone display with GEMex software application, EMExport and Inversion utilities

GEM-2 Package includes: Ski with electronics console with USB stick, Smartphone with Android GEMex software application, EMExport and Inversion utilities, GPS unit, (2) rechargeable batteries, battery charger, shoulder strap, hard shell carrying tube and accessory bag.

For more information please contact us at: info@geophex.com or +1 (919) 839-8515